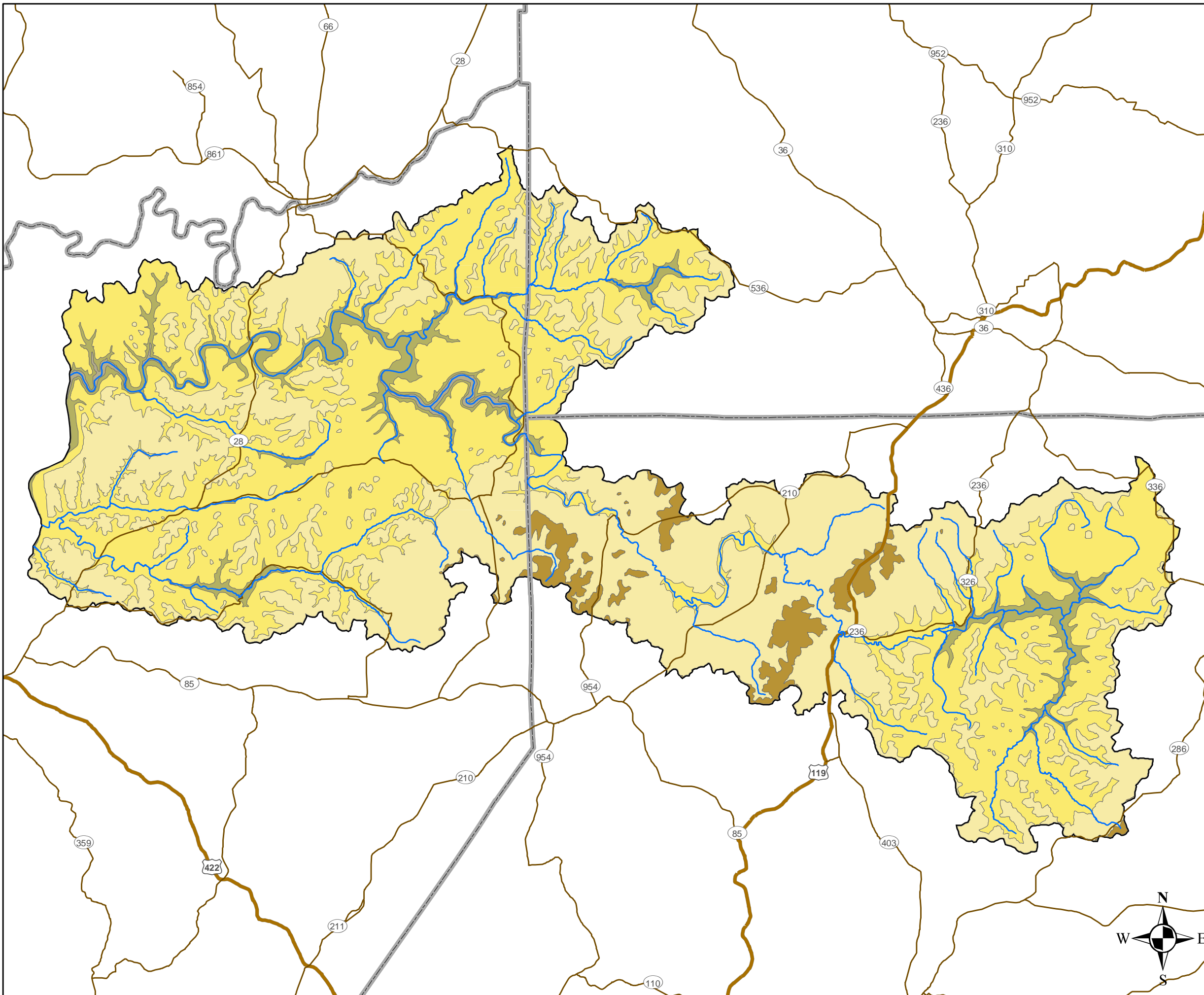





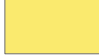


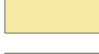



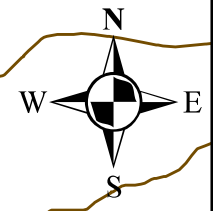


**Figure 2-1**  
**Surface Geology**



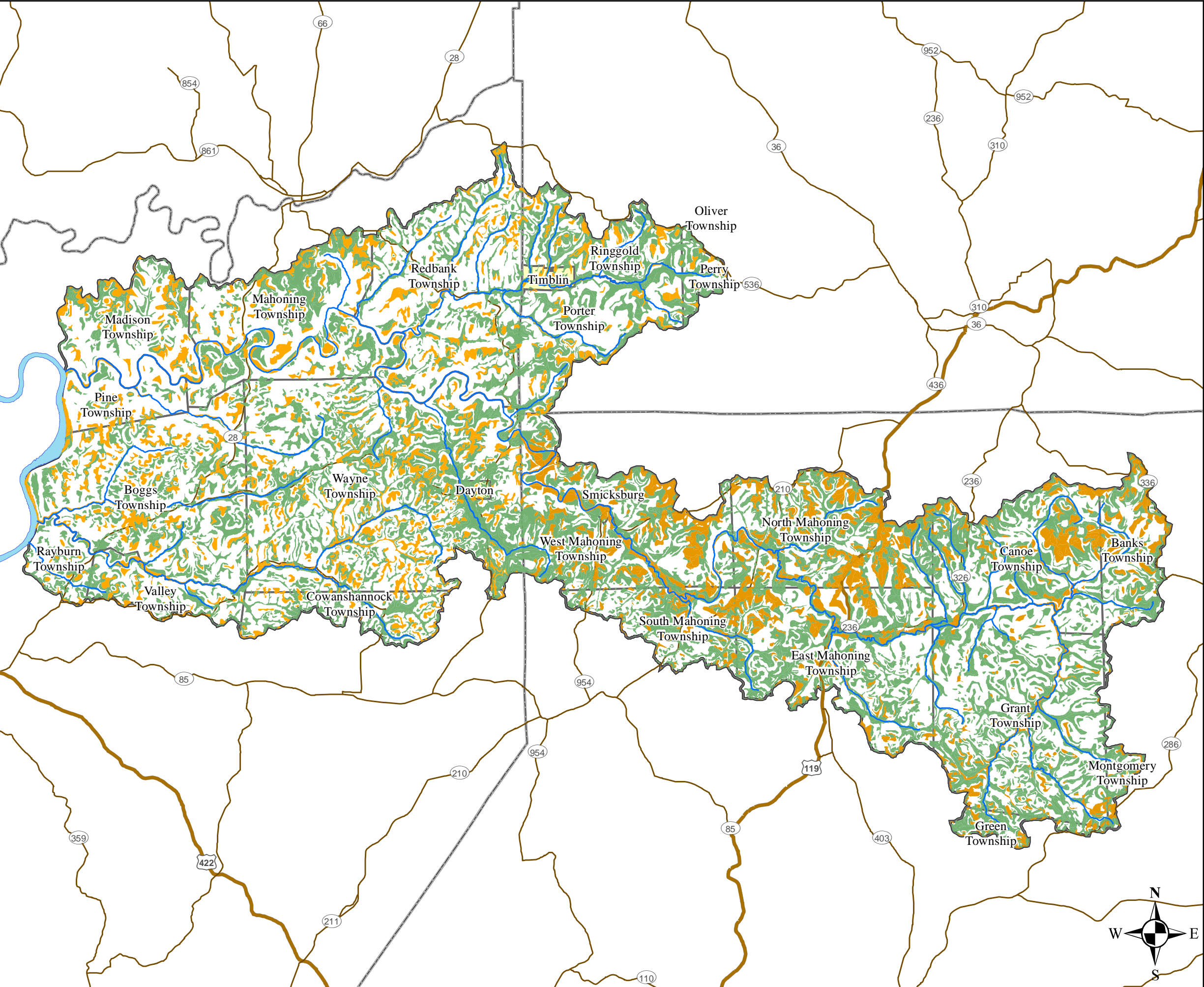
-  Streams
-  Limited Access
-  Highway
-  Major Road
-  County Boundaries
- Surface Geology**
-  Allegheny Formation
-  Burgoon Sandstone
-  Casselman Formation
-  Glenshaw Formation
-  Pottsville Formation
-  Lower Mahoning Watershed








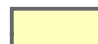

 Miles

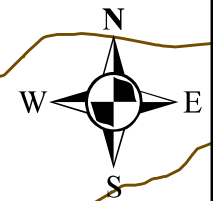
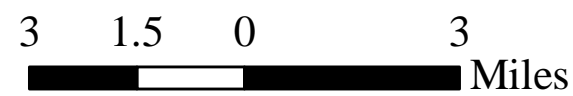




**Figure 2-3**  
**Agricultural Lands**

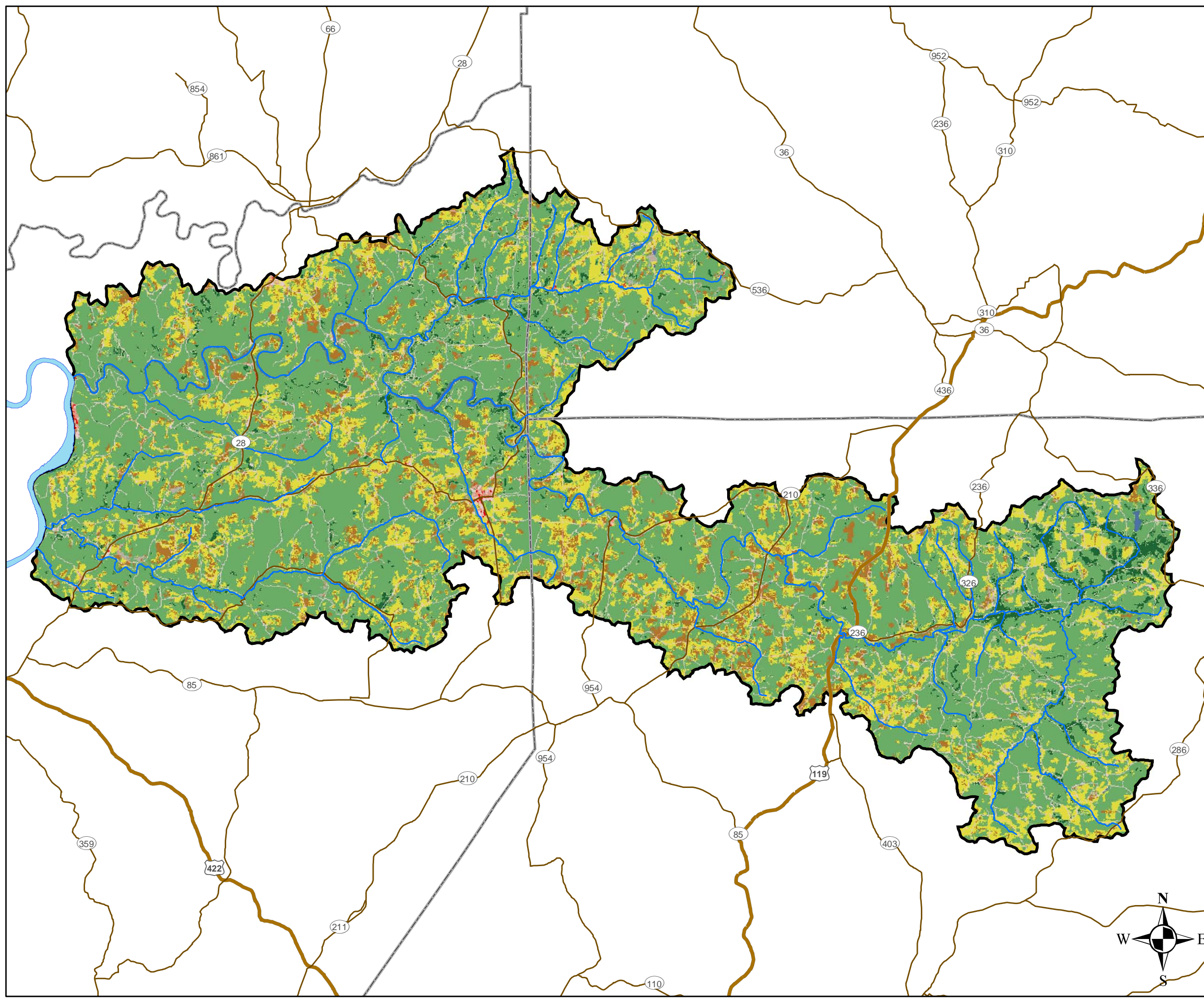


-  Streams
-  Limited Access
-  Highway
-  Major Road
-  Prime Farmland
-  Farmland of Statewide Importance
-  County Boundaries
-  Boroughs and Cities
-  Townships

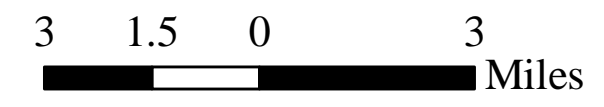


**Figure 2-5**

**Land Use**



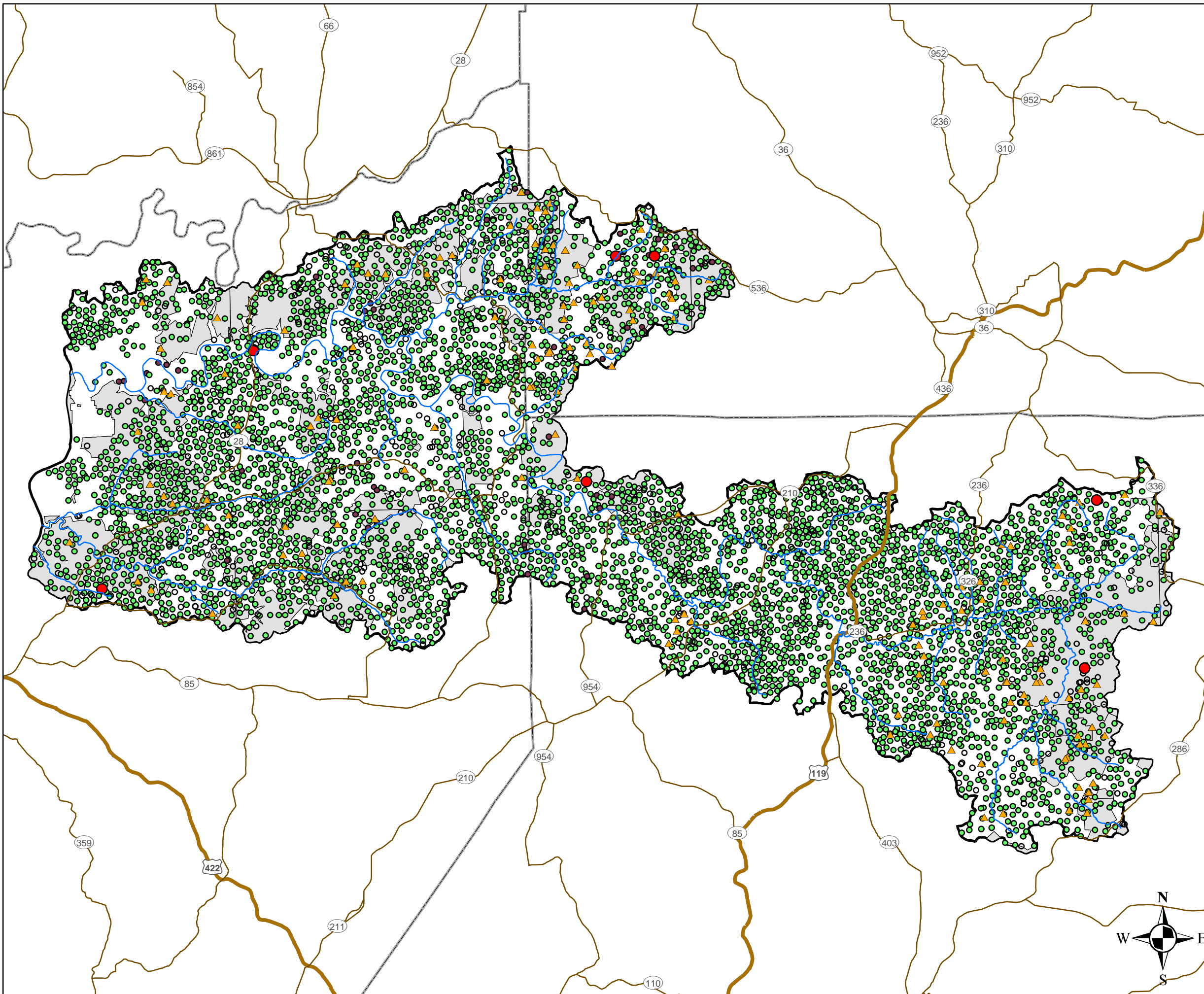
-  Streams
-  Limited Access
-  Highway
-  Major Road
-  County Boundaries
-  Water
-  Developed, Open Space
-  Developed, Low Intensity
-  Developed, Medium Intensity
-  Developed, High Intensity
-  Barren Land
-  Deciduous Forest
-  Evergreen Forest
-  Mixed Forest
-  Shrub/Shrub
-  Grasslands/Herbaceous
-  Pasture/Hay
-  Cultivated Crops
-  Woody Wetlands
-  Emergent Herbaceous Wetlands



Western Pennsylvania  
Conservancy



**Figure 2-6**  
**Mineral Exploration**



- ▲ Coal Mining Operations
- Marcellus Wells

Oil and Gas Wells

- Abandoned
- Active
- Inactive

— Streams

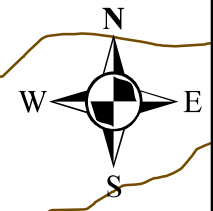
— Limited Access

— Highway

— Major Road

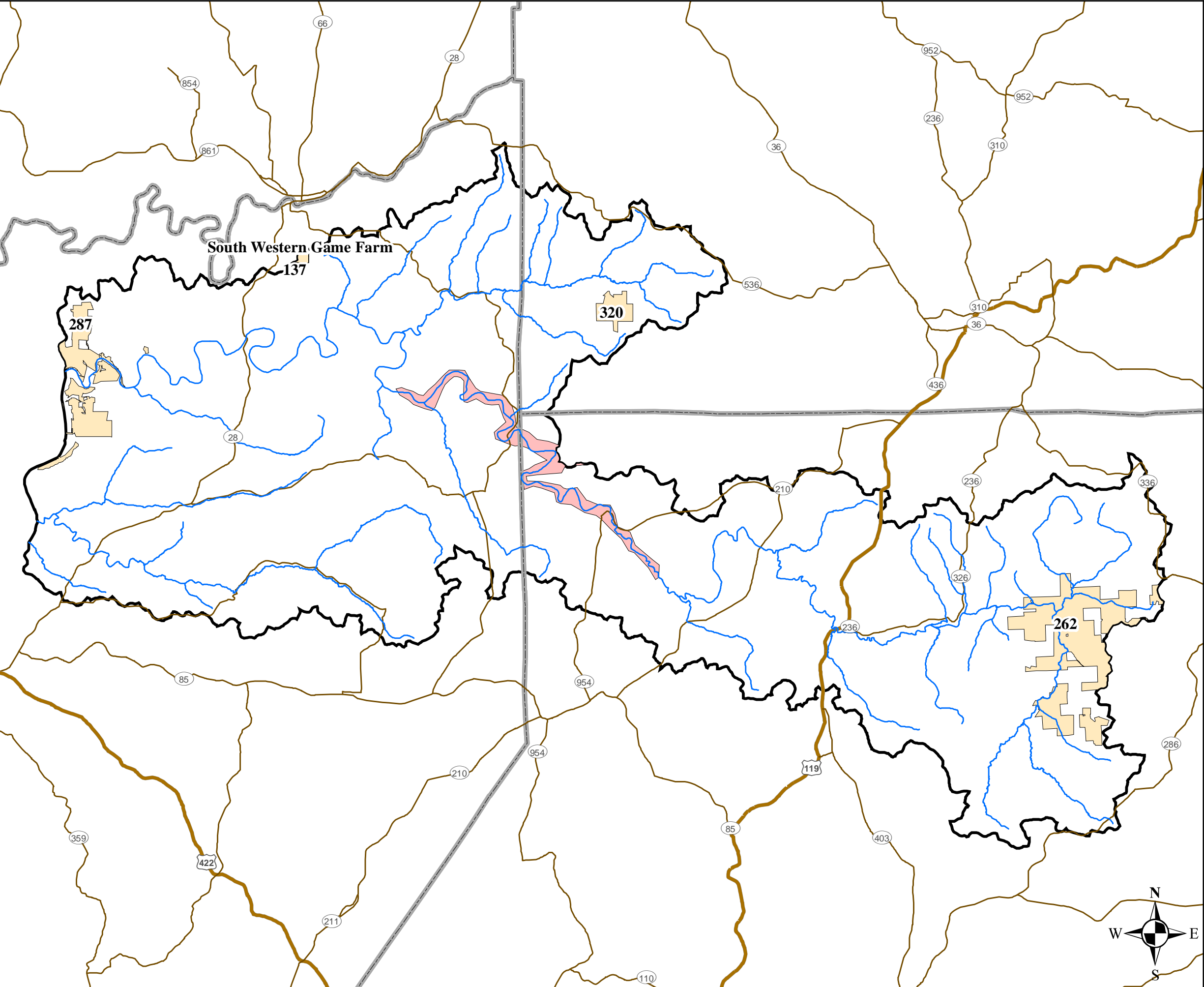
■ Coal Mined Areas

□ County Boundaries

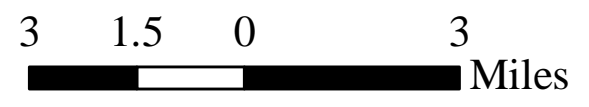


**Figure 2-7**

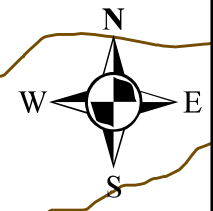
**Public Lands**



- Streams
- Limited Access
- Highway
- Major Road
- County Boundaries
- Army Corps of Engineers Property
- State Game Lands
- Lower Mahoning Watershed

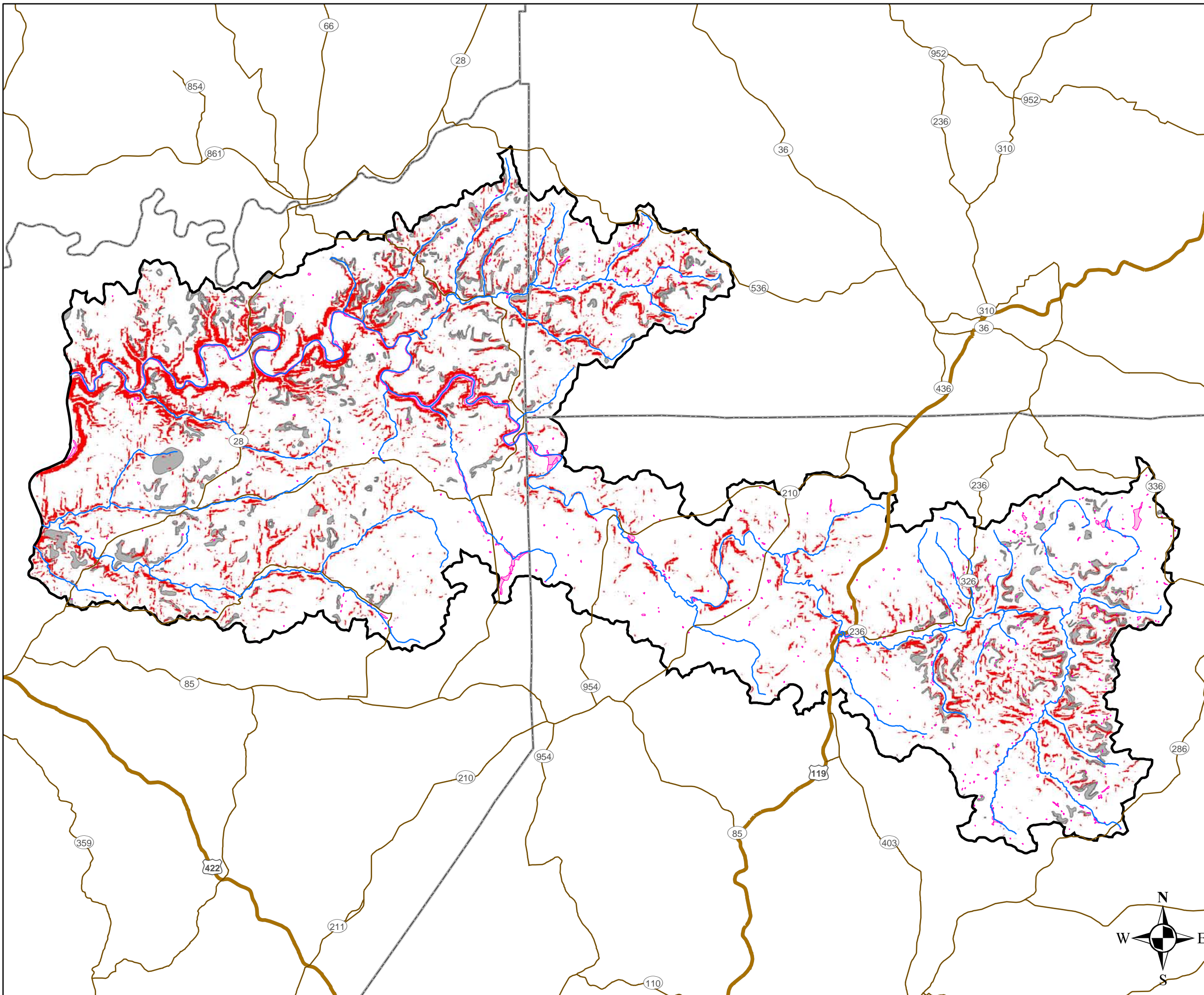








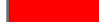

Western Pennsylvania  
Conservancy



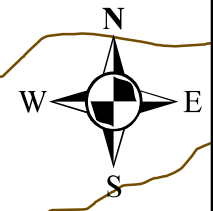
**Figure 2-8**

**Environmental Sensitive Areas**



-  Streams
-  Limited Access
-  Highway
-  Major Road
-  County Boundaries
-  Wetlands
-  Steep Slopes
-  Abandoned Mine Lands

3 1.5 0 3 Miles



Western Pennsylvania  
Conservancy



water, land, life.